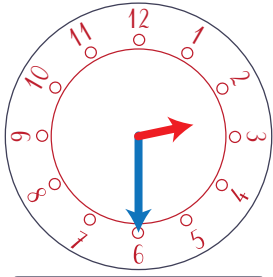
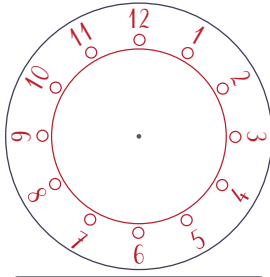


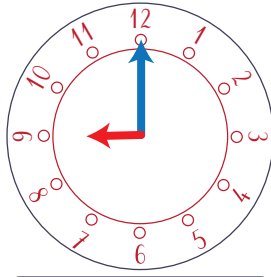
1. Complète les horloges avec les aiguilles ou les bandeaux avec l'heure en chiffre :



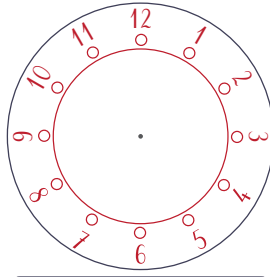
... h ...



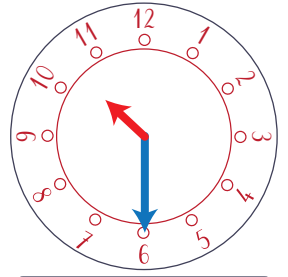
4 h 00



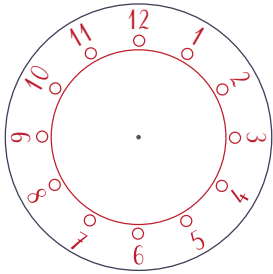
... h ...



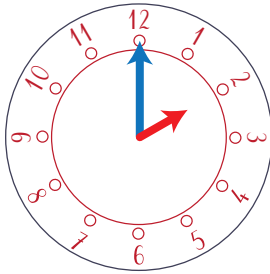
9 h 30



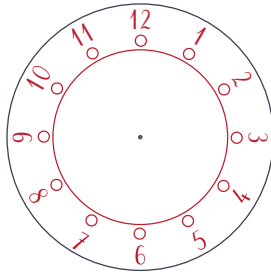
... h ...



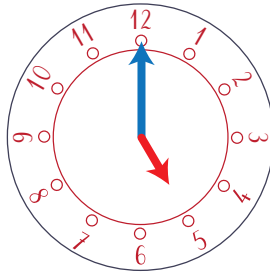
11 h 30



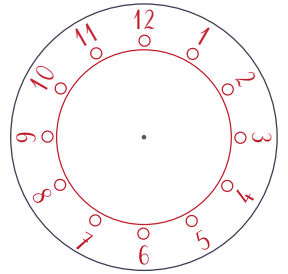
... h ...



3 h 30

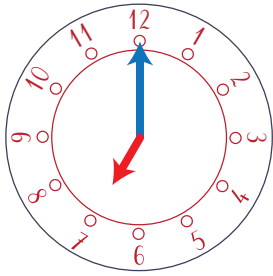


... h ...

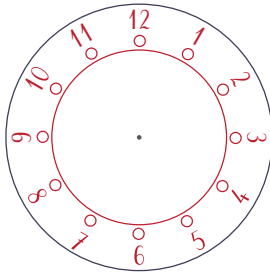


12 h 00

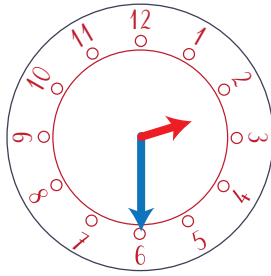
2. Complète les horloges avec les aiguilles ou les bandeaux avec l'heure en chiffre pour le matin et pour l'après midi :



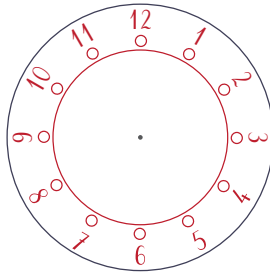
... h ...



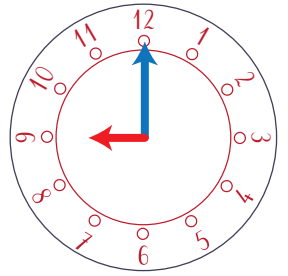
8 h 30



... h ...



3 h 00



... h ...

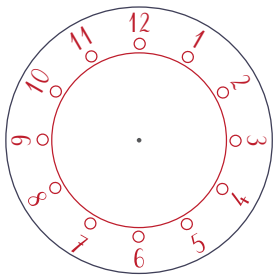
... h ...

... h ...

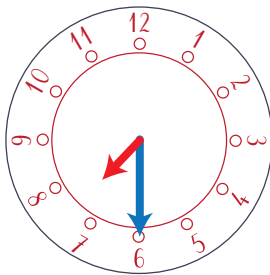
... h ...

... h ...

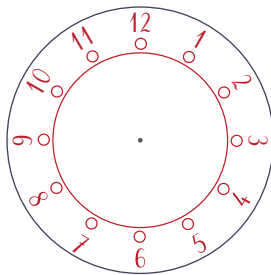
... h ...



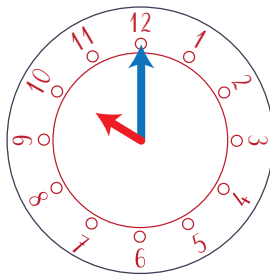
6 h 00



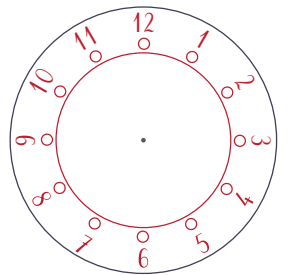
... h ...



2 h 30



... h ...



7 h 00

... h ...

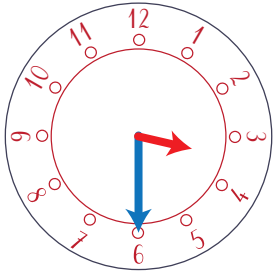
... h ...

... h ...

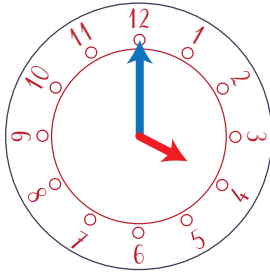
... h ...

... h ...

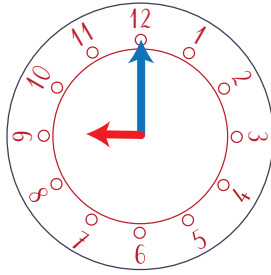
1. Complète les horloges avec les aiguilles ou les bandeaux avec l'heure en chiffre :



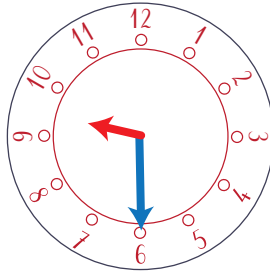
3 h 30



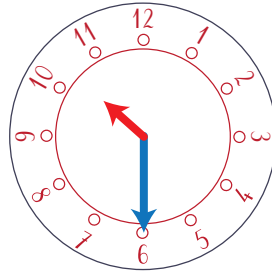
4 h 00



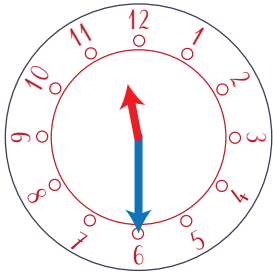
9 h 00



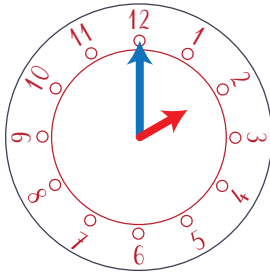
9 h 30



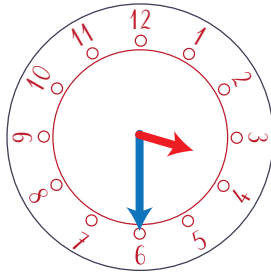
10 h 30



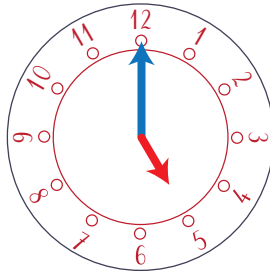
11 h 30



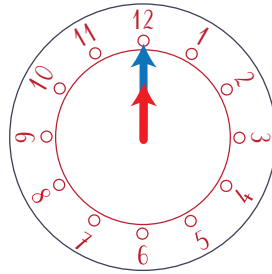
2 h 00



3 h 30

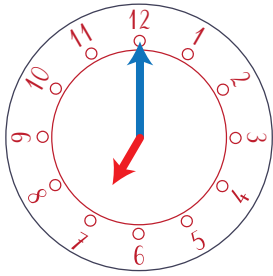


5 h 00

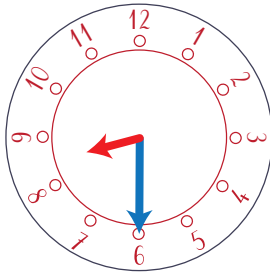


12 h 00

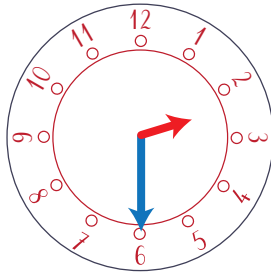
2. Complète les horloges avec les aiguilles ou les bandeaux avec l'heure en chiffre pour le matin et pour l'après midi :



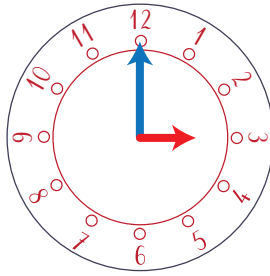
7 h 00



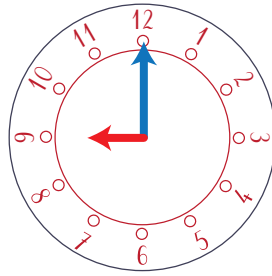
8 h 30



2 h 30



3 h 00



9 h 00

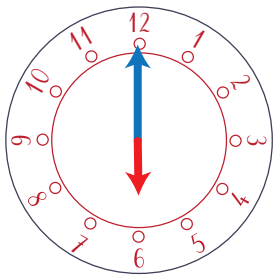
19 h 00

20 h 30

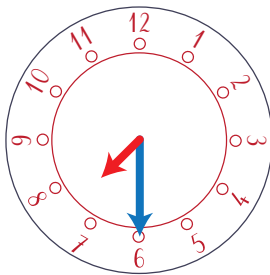
14 h 30

15 h 00

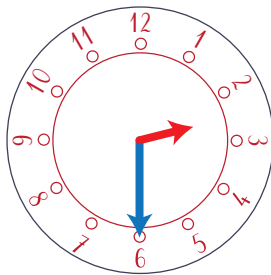
21 h 00



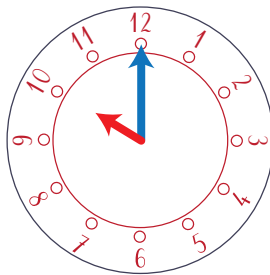
6 h 00



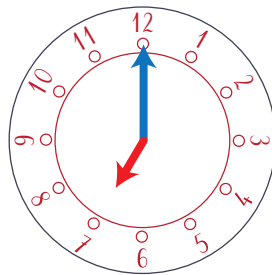
7 h 30



2 h 30



10 h 00



7 h 00

18 h 00

19 h 30

14 h 30

22 h 00

19 h 00